



# CFM351M SERIES

## 350 WATT MEDICAL AC-DC POWER SUPPLY WITH PFC



### Features

- \* Universal Input Range 90~264Vac
- \* Meets EN60601-1 and EN55011 Class B
- \* 350W with free air convection @ 220Vac
- \* Active PFC Meets EN61000-3-2 Class D
- \* High Efficiency Up to 93% Typical
- \* Remote Voltage Sense
- \* PS ON/OFF Remote Control
- \* +5V Stand-by Output Power
- \* 12V fan output
- \* Meets 2MOPP



MODEL	VOLTAGE OUTPUT	OUTPUT CURRENT(A)		RIPPLE & NOISE	VOLTAGE ADJ.RANGE	VOLTAGE ACCURACY	LINE REG.	LOAD REG.	% EFF. (Typ.)
		RATED1	RATED2						
<b>Main Output Voltage</b>									
CFM351M050	+5V	60	40	100mVp-p	4.75~5.25	±1.0%	±0.5%	±1%	88%
CFM351M120	+12V	29.2	25	120mVp-p	11.4~12.6	±1.0%	±0.5%	±1%	92%
CFM351M240	+24V	14.6	12.5	150mVp-p	22.8~25.2	±1.0%	±0.5%	±1%	93%
CFM351M480	+48V	7.3	6.25	150mVp-p	45.6~50.4	±1.0%	±0.5%	±1%	93%
<b>Stand-by Output Voltage</b>									
All	+5.0V	0.3	0.3	---		---	---	---	
<b>Fan Output Voltage</b>									
All	+12.0V	0.3	0.3	---		---	---	---	

Note: 1. RATED1: 10CFM Air Flow

2. RATED2: Natural Convection (at 110 ~ 200 Vac, refer to derating curve)

授权代理商: 西安浩南电子科技有限公司 TEL:029-88231631 FAX:029-88231651  
网址: [www.haonpower.com](http://www.haonpower.com) 邮箱: [info@haonpower.com](mailto:info@haonpower.com)

Specifications are subject to change without notice.

# Specifications

## INPUT SPECIFICATIONS:

AC Input Voltage ..... 90~264Vac  
 Frequency ..... 47 to 63Hz  
 Inrush Current ..... 5 0A max. @240Vac  
 Leakage Current @ 264Vac ..... 300uA max.

## OUTPUT SPECIFICATIONS:

Total Rated Output Power ..... 350W  
 Remote Voltage Sense ..... Compensates for wire Voltage drop  
 Adjustment Range on Vout ..... ±5%  
 Hold-up Time ..... 16ms typ.  
 Over Voltage Protection ..... Recycle AC input to restart  
 Short Circuit Protection ..... Hiccup mode(Auto Recovery)  
 Temperature Coefficient ..... ±0.05% /°C

## GENERAL SPECIFICATIONS:

Isolation ..... Input to output = 565 6VDC  
 Operating Temperature ..... -20 ~ 70°C (see Derating Curve)  
 Storage Temperature ..... -40~85°C  
 Humidity ..... 93% RH max. Non condensing  
 Switching Frequency ..... 55KHz Typical  
 MTBF ..... MIL-HDBK-217F, GB, 25 °C/115VAC ..... 100 K hrs min.  
 Altitude ..... 3000m  
 Dimensions ..... 6.500x4.000x1.516 Inches (165.00x101.60x38.60mm)  
 Weight ..... 640g(1.42Pounds)

## SAFETY AND EMC:

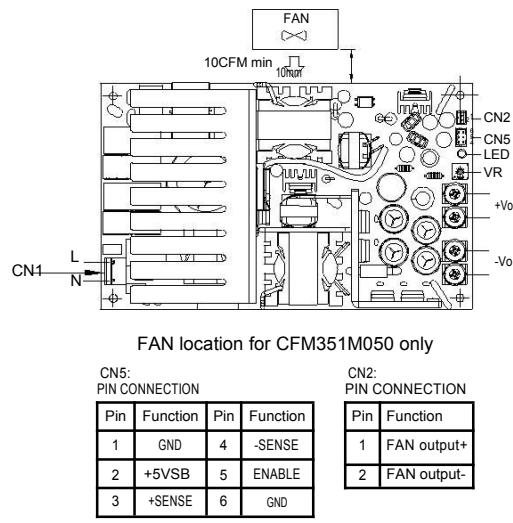
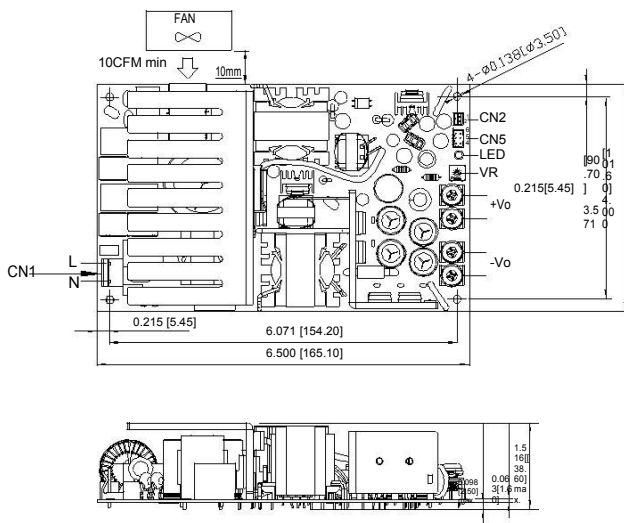
Emission and Immunity ..... EN55011 Class B, FCC Part 15 Class B  
 EN60601-1-2, EN61000-3-2 Class A, B, C, D, EN61000-3-3 Safety .....  
 IEC60601-1:2005, EN60601-1:2006, ANSI/AAMI ES60601-1:2005

## NOTE:

1. Add a 0.1uF ceramic capacitor and a 47uF E.L. capacitor to output for Ripple & Noise measuring @20MHz BW.
2. Voltage accuracy is set at 60% rated load and 25°C.Ta.
3. Line regulation is measured from High Line to Low Line with rated load.
4. Load regulation is measured at 60%±40% rated.
5. CN1: LONG CHU P3060 Series or Equivalent  
 CN2: JST B2B-PH-K-S or Equivalent  
 CN5: LONG CHU P220V Series or Equivalent

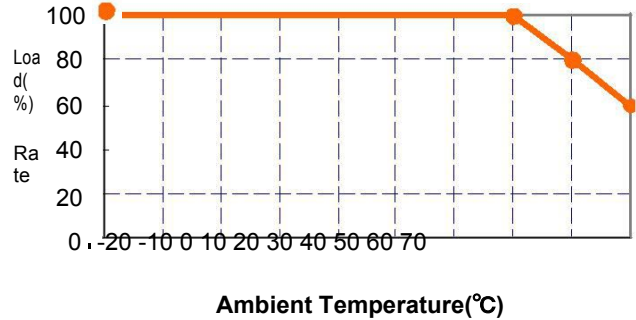
## Mechanical Specification

Tolerances Inches: X.XX= ±0.04 , X.XXX= ±0.010  
 Millimeters: X.X= ±1.0 , X.XX=±0.25



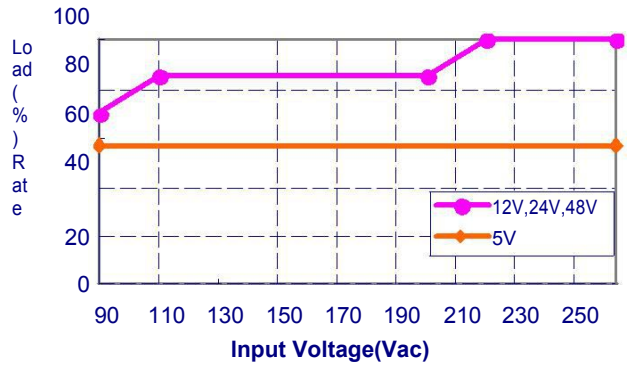
# CFM351M Series Derating Curve

## 350W With 10CFM Air Flow

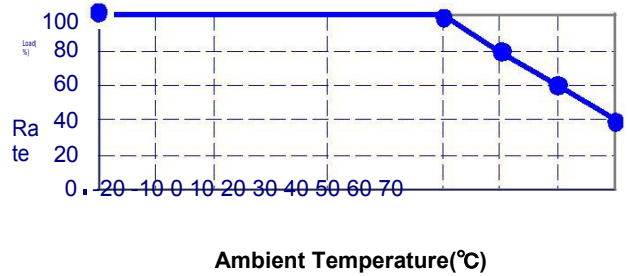


Ambient Temperature(°C)

## 350W With Natural Convection



Input Voltage(Vac)



Ambient Temperature(°C)

Typical at 25 °C, 230Vac and 60% rated load, unless otherwise Specified